

NOW WITH 5 YEAR WARRANTY

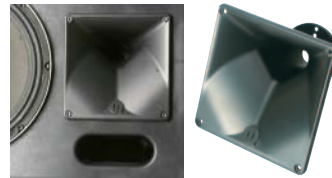
QS 350i two-way passive speaker

Hearing is believing. The stunning sonic performance of the QS350i is enhanced by the fact it has more pro features than most high end brand compact speakers many times the price.

This very compact multi-purpose live sound/installation speaker system is loaded with custom-designed Quest manufactured components including the new Quest HF rotatable asymmetrical wave-guide, patented technology horn driver and very versatile rigging options. With 400 watts RMS power handling, it's the most comprehensive plastic pro speaker system available today.



ROTATABLE HORN FLARE



CUSTOM 12" MID-BASS DRIVER



SUITABLE FOR USE WITH WB-350 MOUNTING BRACKET



Specifications

- Design Type: Passive 2-way bass reflex
- Components - LF: 1 x 12" 8Ω 3" coil mid-bass cast frame woofer
- HF: 1 x 1" Throat driver, titanium diaphragm
- HF Dispersion: 90–30° x 60°
- Rotatable Horn Flare: Asymmetric rotatable
- Connectors: 2 x XLN4
- Construction: Injection moulded ABS plastic
- Crossover Frequencies: 2Khz Passive 18dB
- Handles: 1 Side handle
- Flying Points: M8 inserts on top/bottom
- Frequency response: 50Hz–20Khz ±3dB
- Front Finish: Perforated acoustic foam behind powder-coated steel grill

- Max SPL: 124dB Nominal.127dB Peak
- Nominal Impedance: 8Ω
- Power handling: 400w RMS (700w Peak)
- Sensitivity 1W @ 1m: 98dB SPL Nominal. 95dB SPL Wideband
- Stand Fitting: 36mm pole fitting
- Speaker Cables: 2- Speakon NL-4 wired 1- and 1+ on the input connector. Connectors are wired in parallel
- Dimensions (mm): H610x W420 x D340
- Net weight: 19 Kg
- Shipping weight: 22Kg